

40X



NATURE COLLECTION SKETCH

VOCABULARY CARDS WITH BACK DESIGN



directions

When printing out flash cards you MUST CHOOSE on your printer, the **PRINT ON BOTH SIDES- flip on short edge**, option so your flashcards come printed double side, and the correct way up. Then simple laminate and cut-out each flashcard

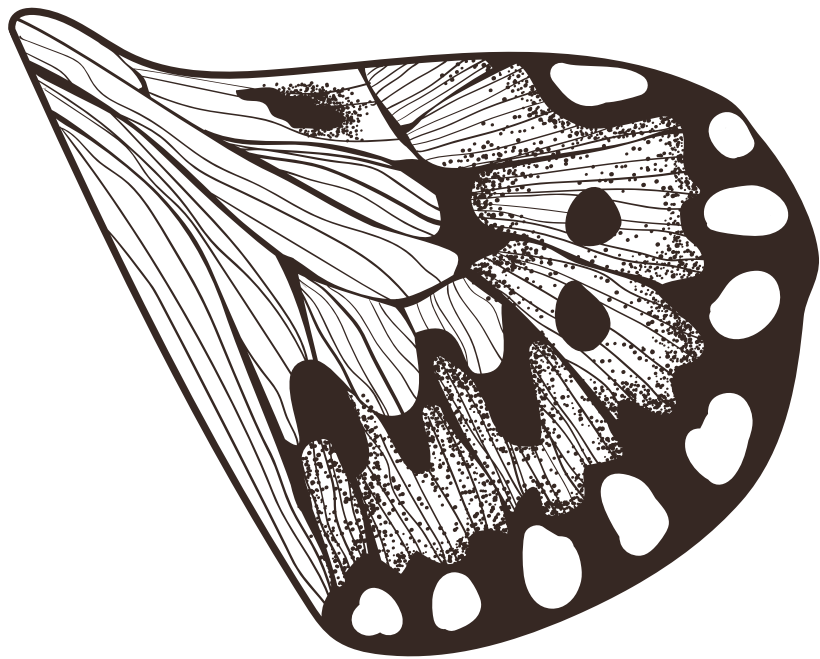
some ideas include:

- hang around walls for decor
- put in nature basket on nature table, or in frame on nature shelf.
- add a flash card to your makerspace, and get children to try recreate the image using, playdough, loose parts, paint, etc.
- add a group of cards to your morning baskets ,punch holes around the card to get kids to weave string through
- double print flashcards to make a game of memory match

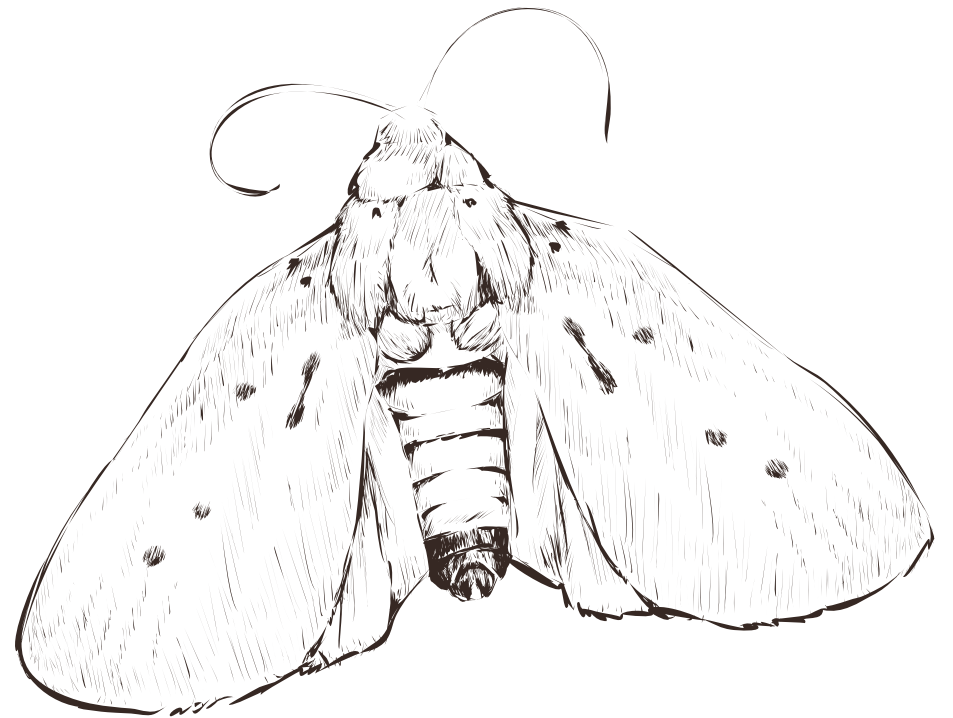
We would love to see how you use
our cards

-feel free to tag us over on
instagram, @embracethewildling





BUTTERFLY WING



MOTH





FOSSIL SPECIMEN

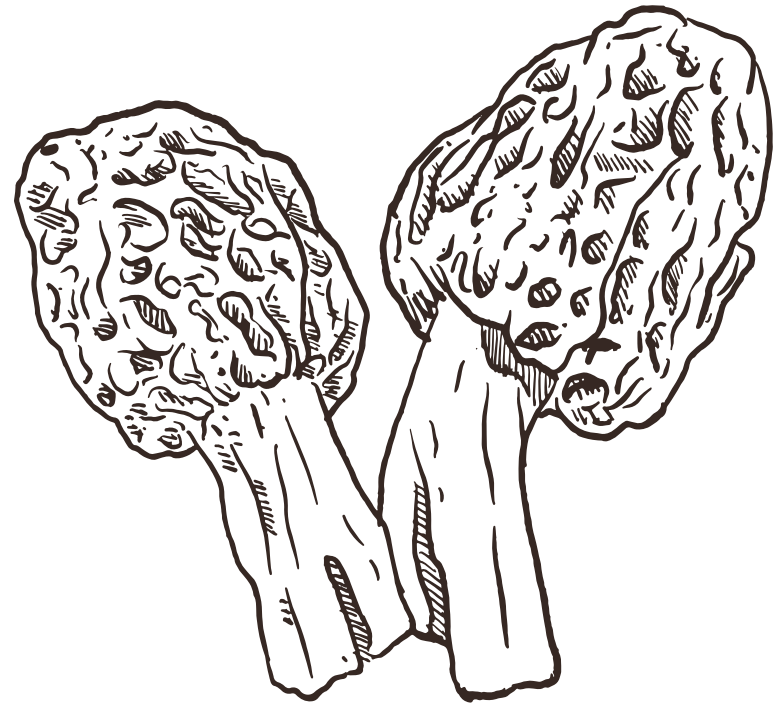


WASP NEST



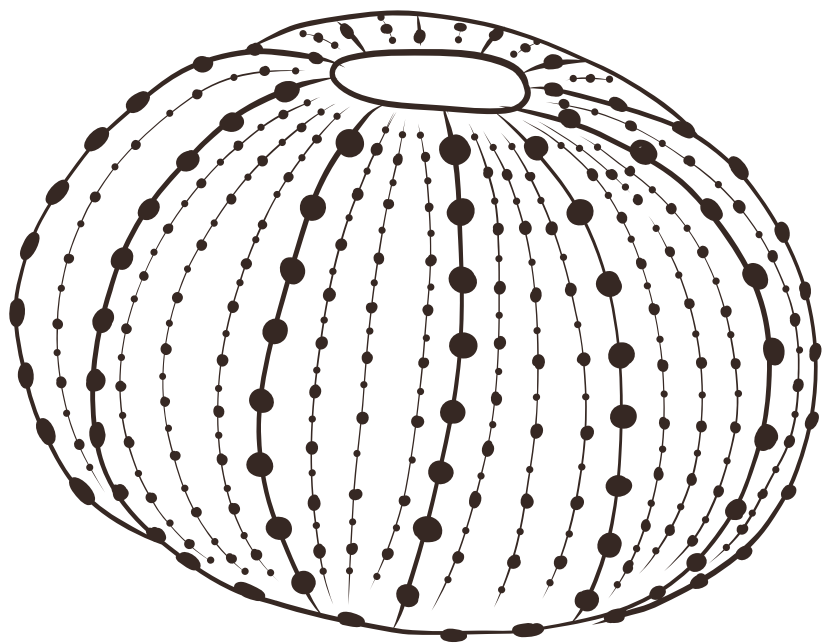


SPECIMEN VIALS

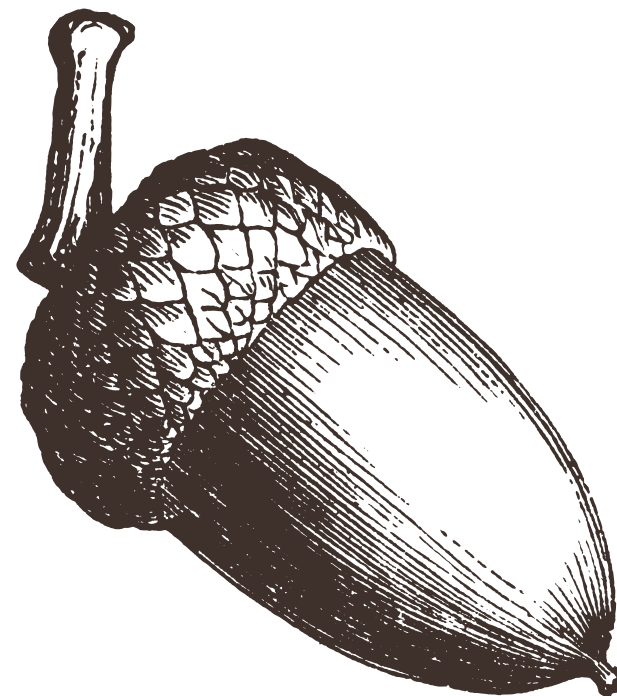


MOREL MUSHROOM





SEA URCHIN

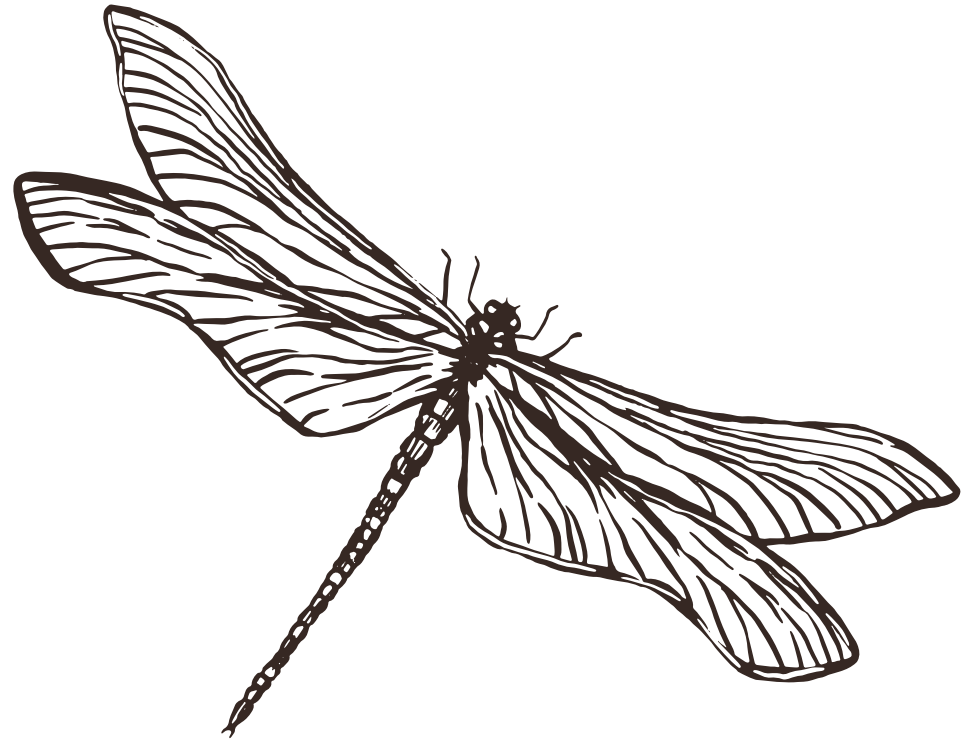


ACORN





OYSTERS



DRAGONFLY





FIDDLE HEAD

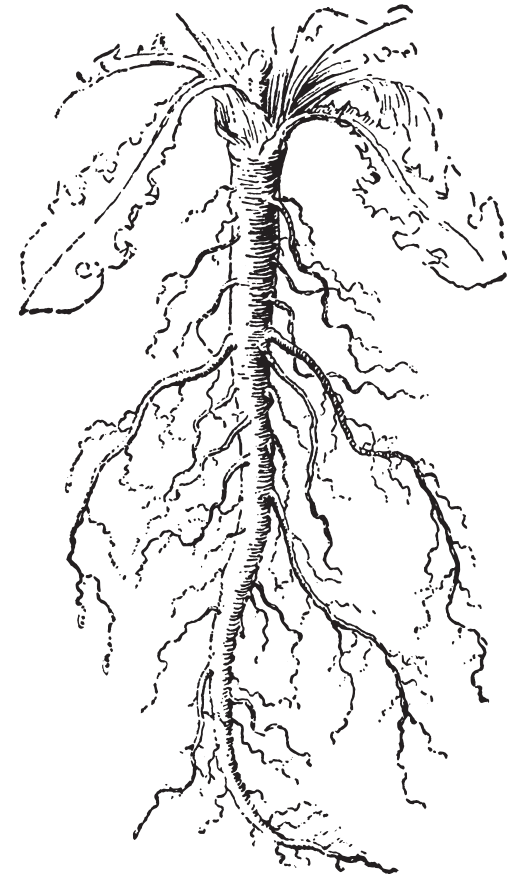


VEGETABLES





CORAL

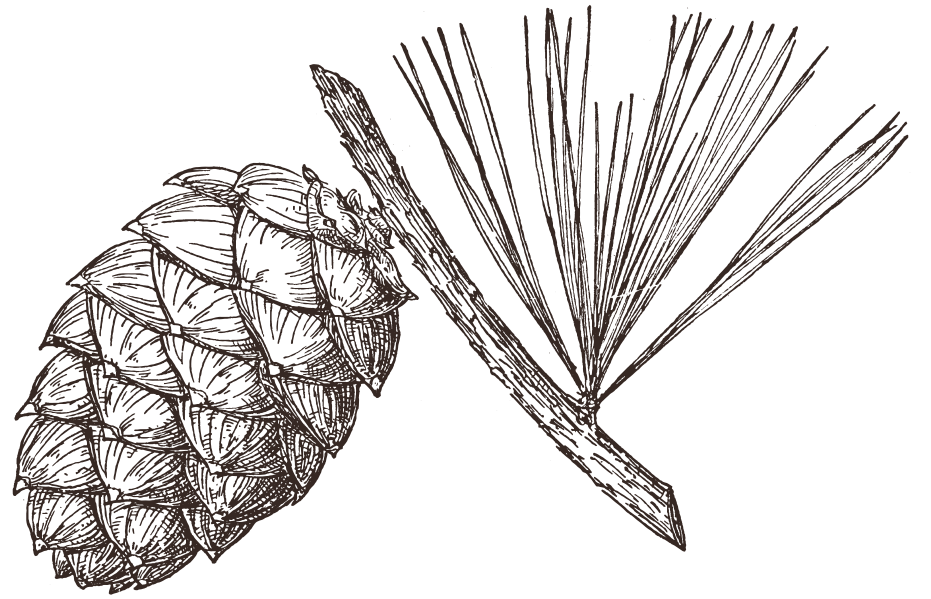


TAPROOT





CACTUS

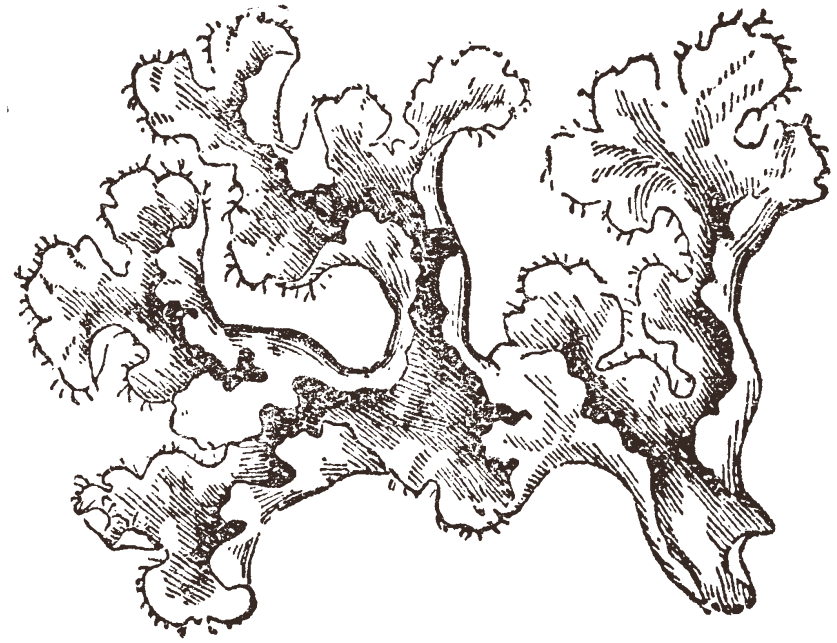


PINECONE





LEAF



MOSS



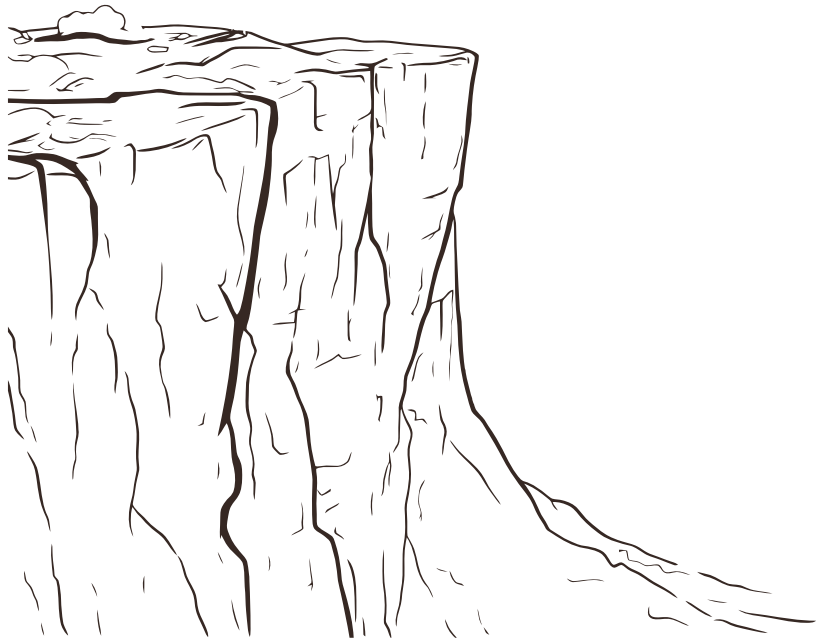


LUNA MOTH



WILDFLOWER





CLIFF EDGE



PEPPERMINT





TREE

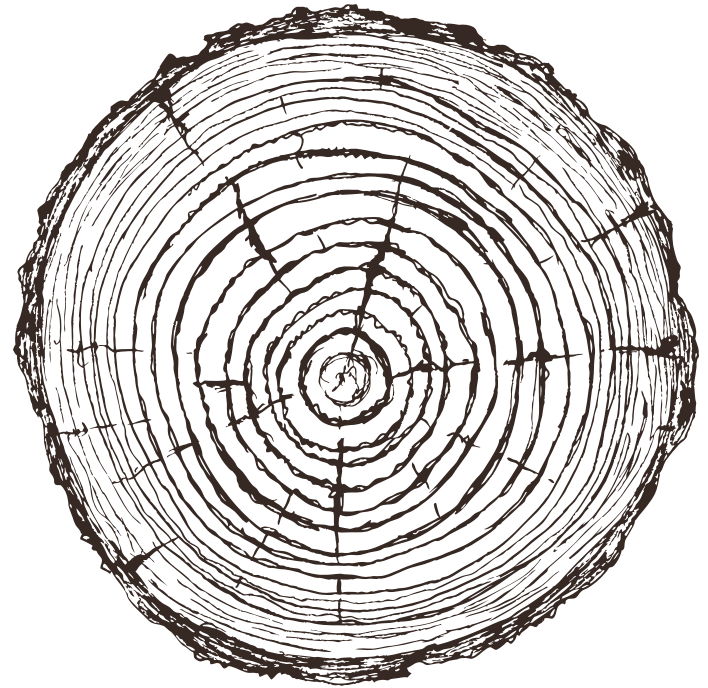


BIRDNEST



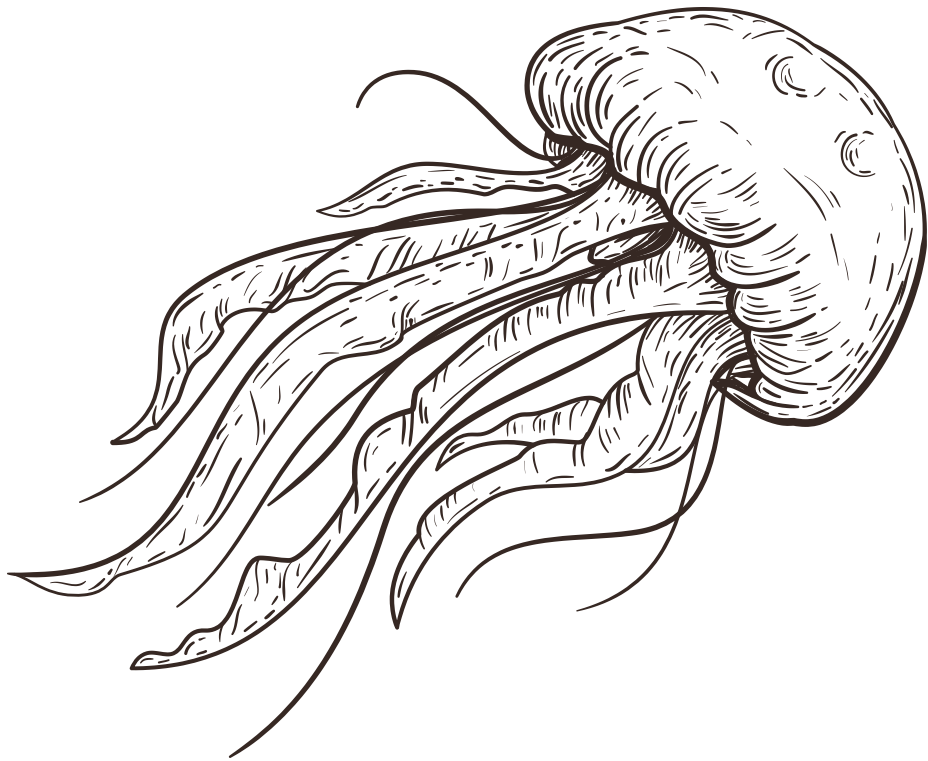


CHRYSALIS

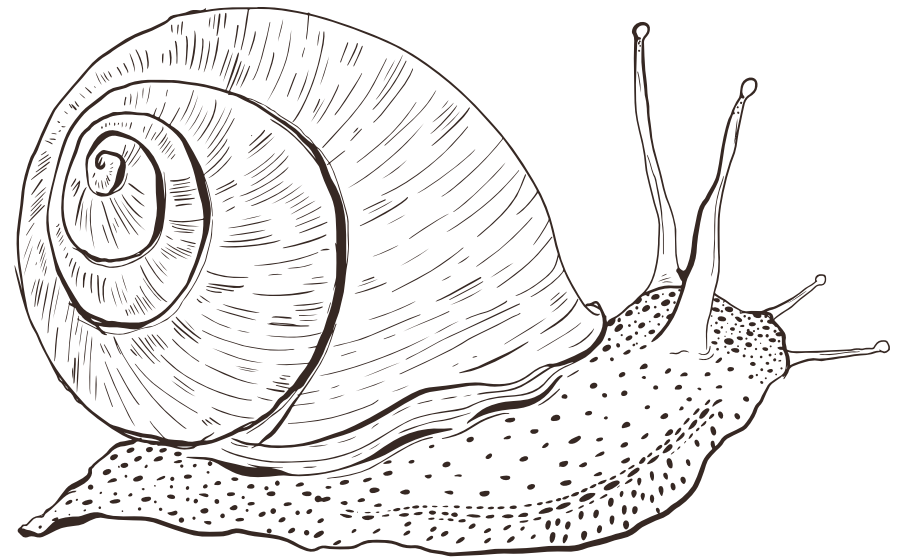


TREE TRUNK



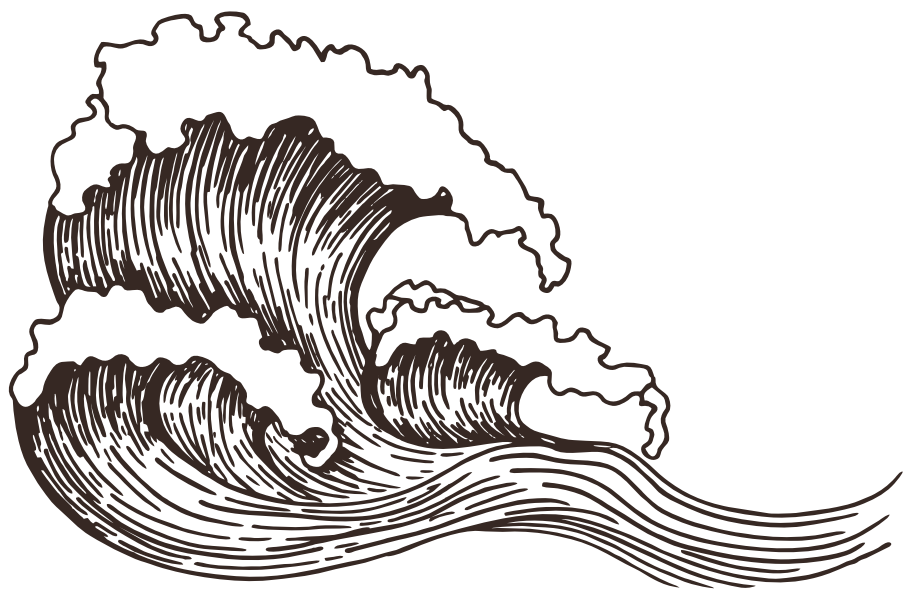


JELLYFISH



SNAIL





WAVE

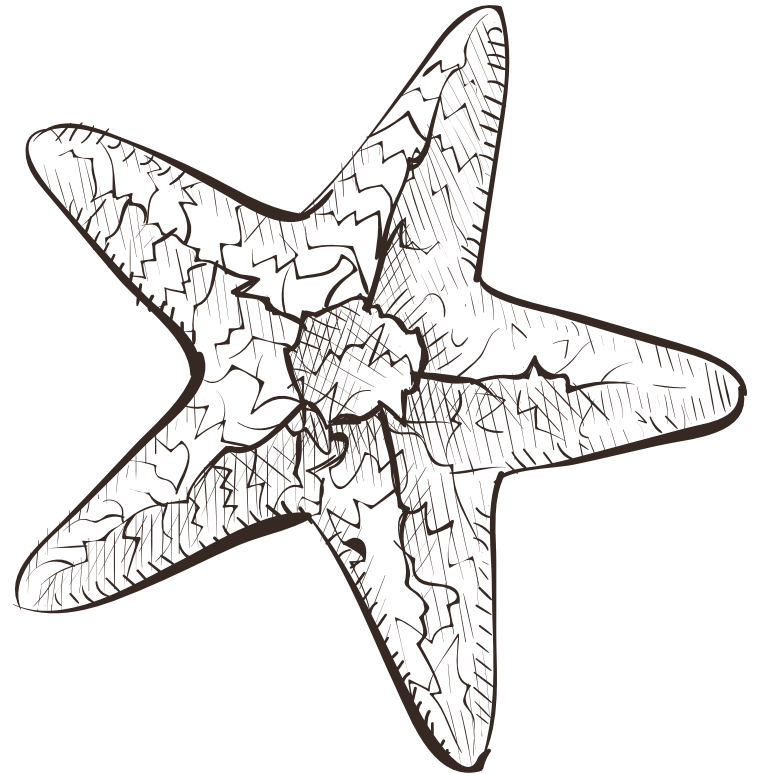


SEA SHELL



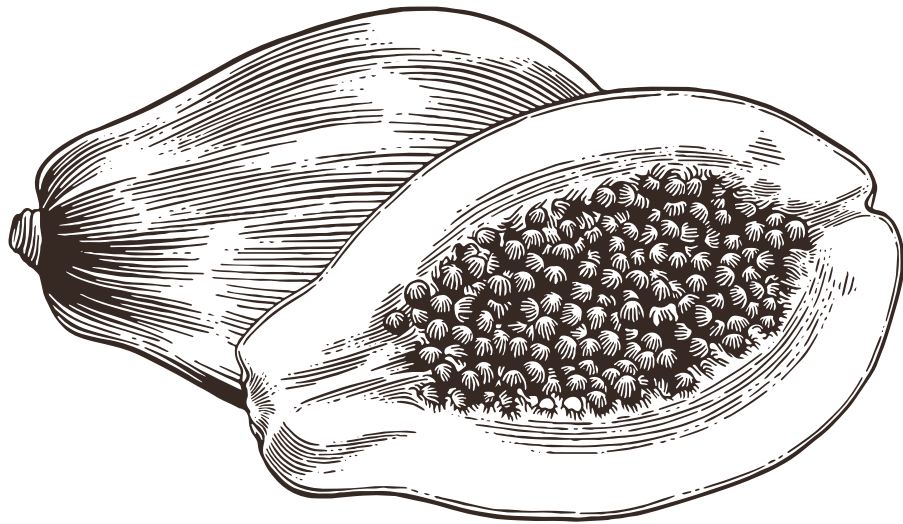


WHEAT

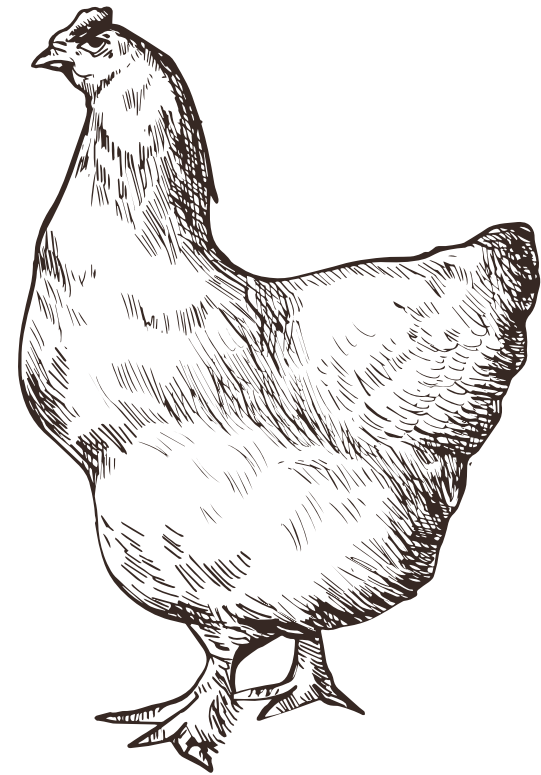


STARFISH





PAPAYA



CHICKEN





PUMPKIN

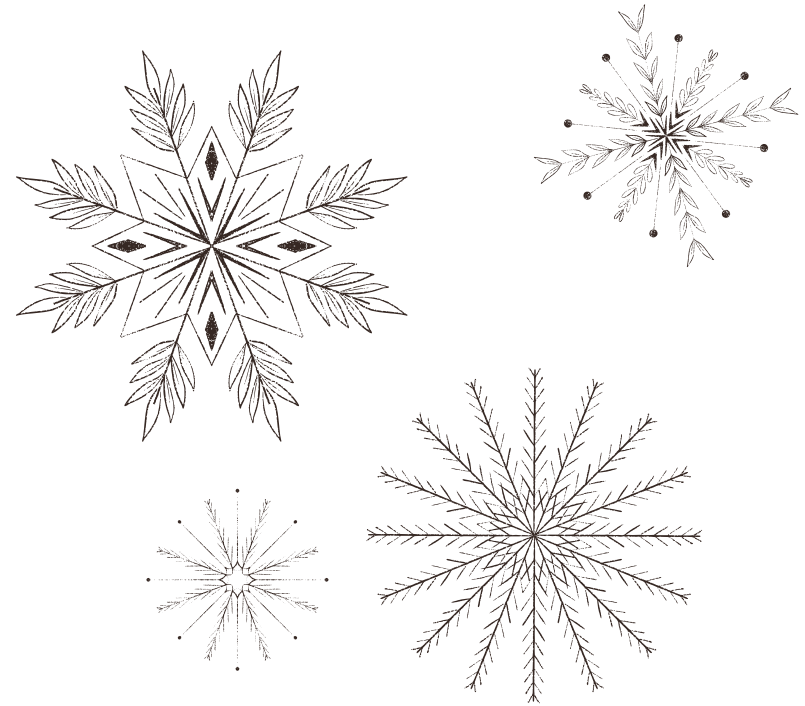


EARTH



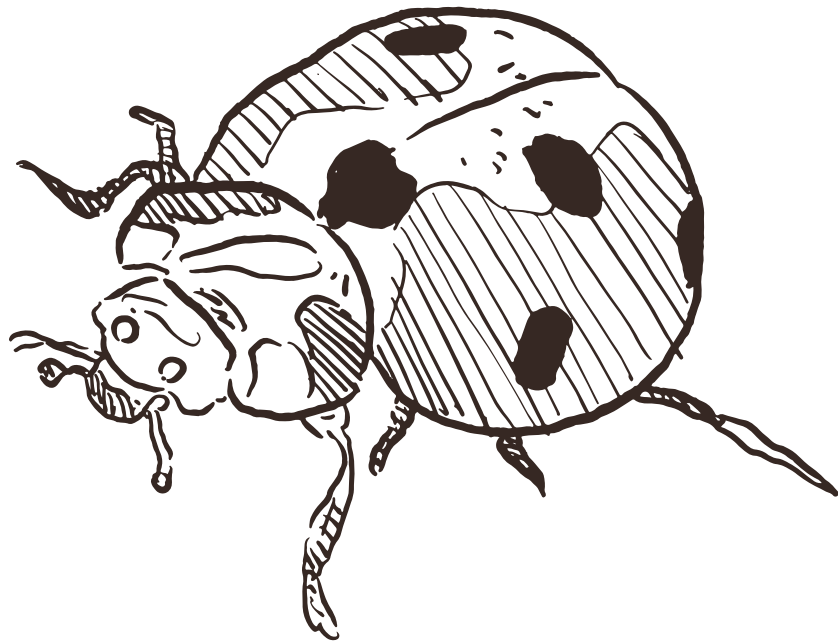


GRAPES

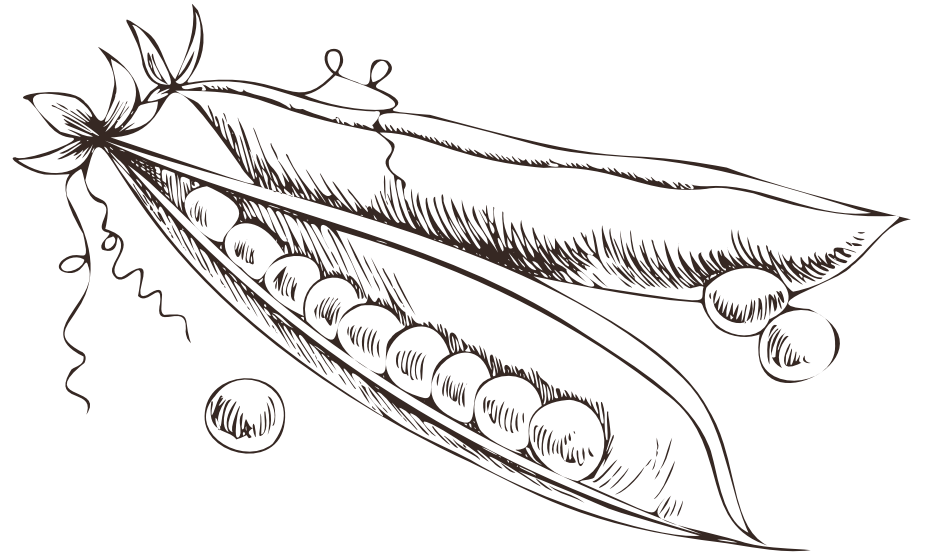


SNOWFLAKE





LADYBUG/BIRD



PEAS

