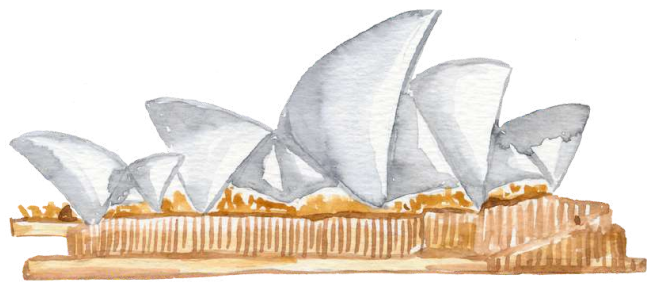


Sydney Harbour  
Bridge



Sydney Opera  
House



Uluru



Great Barrier  
Reef



either cut out each card and clip the correct letter for each animal OR colour in the correct letter box



c

k

q



v

u

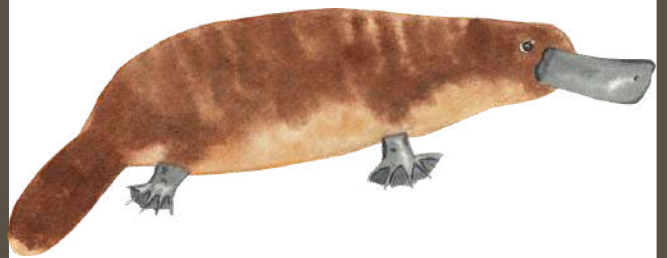
w



k

h

c



p

d

o

either cut out each card and clip the correct letter for each animal OR colour in the correct letter box



c

k

q



e

f

i



k

h

c



p

d

o

cut out to form your Australian animal flash cards



kangaroo



koala



emu



wombat

cut out to form your Australian animal flash cards



platypus



echidna



dingo



possum

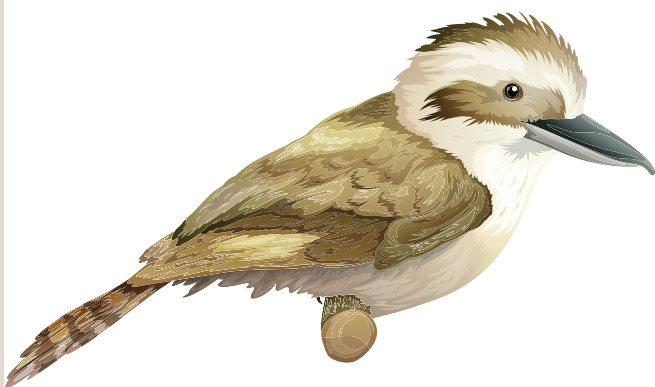
cut out to form your Australian animal flash cards



crocodile



sugar glider



kookaburra



quoll

cut out to form your Australian animal flash cards



cane toad



tasmanian devil



cockatoo

Native  
animals from  
AUSTRALIA  
flashcards



A



Australia

B



Bilby

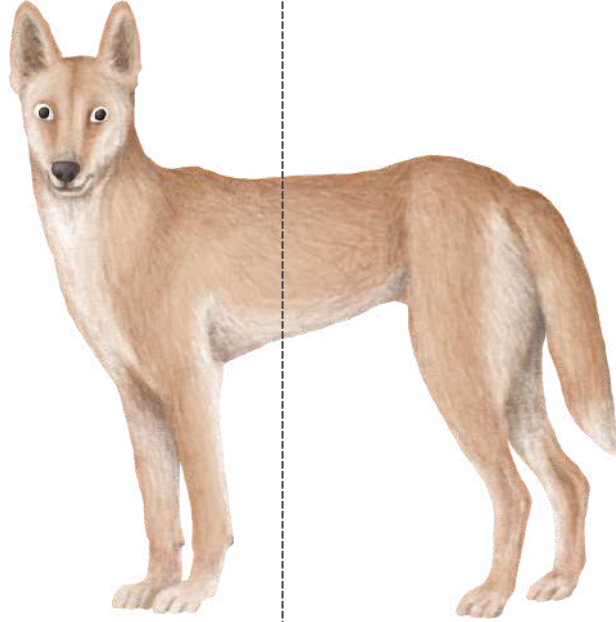


C



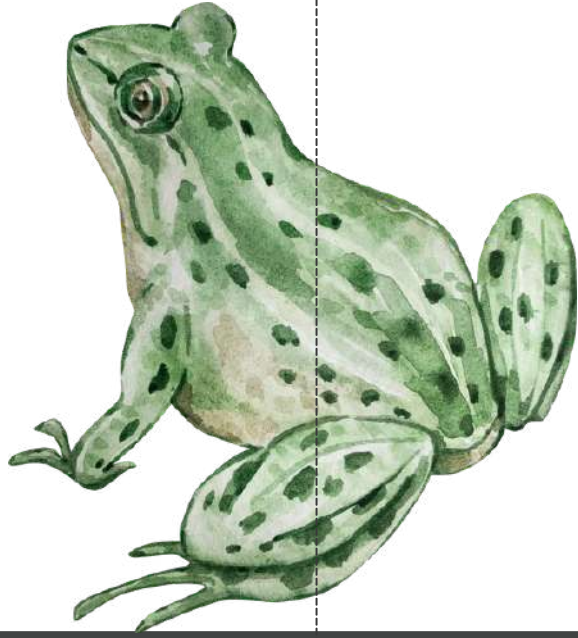
Cockatoo

D



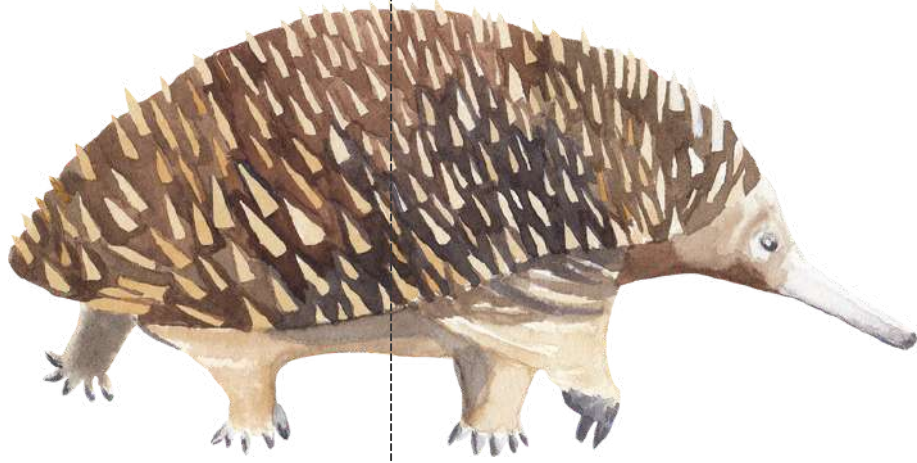
Dingo

E



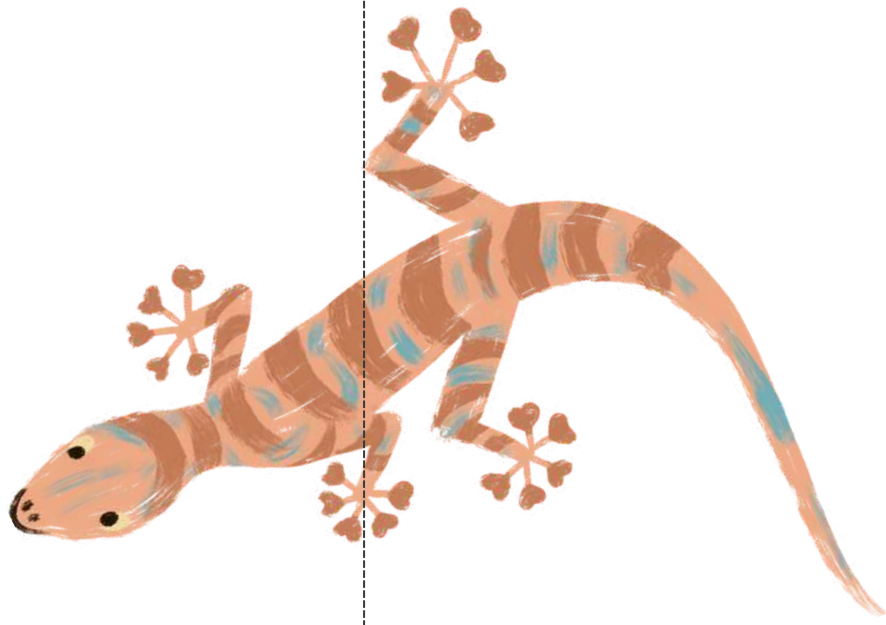
Frog-  
green  
tree frog

E



Echidna

G



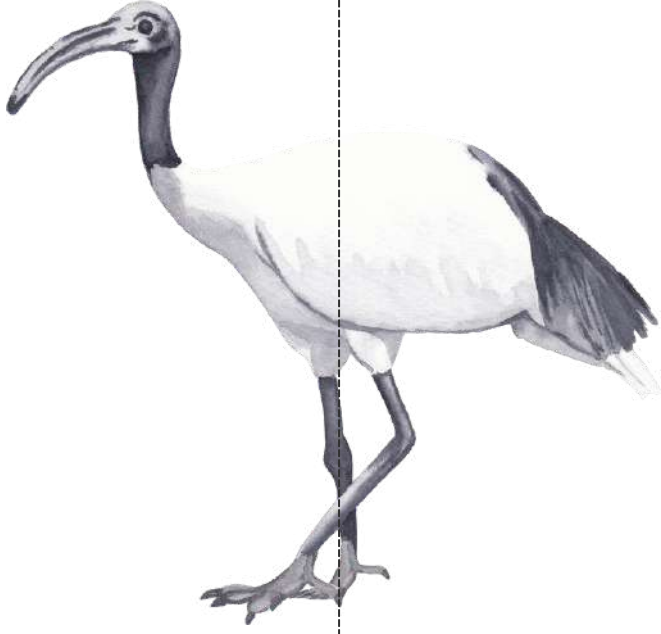
Gecko

H



Huntsman

I



Ibis

J



Joey

K



Koala

L



Lorikeet

M



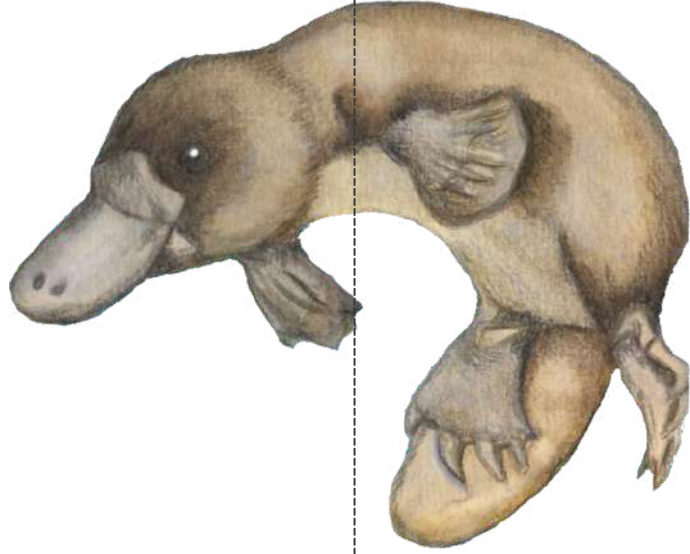
Magpie

N

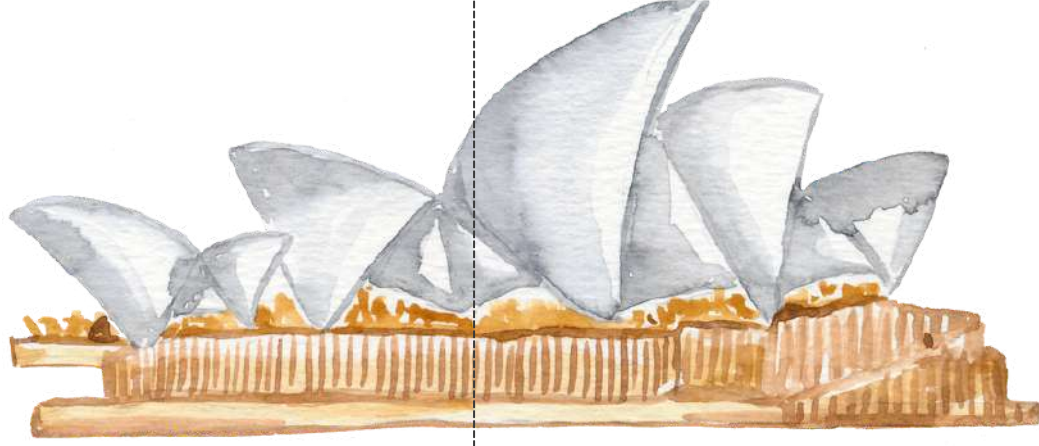
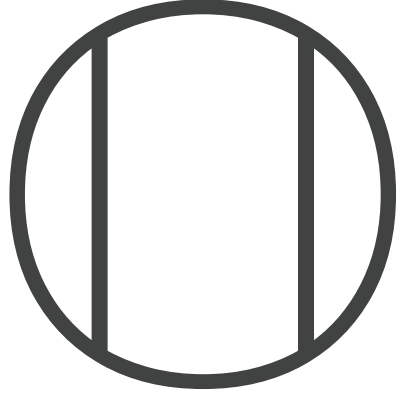


Numbat

P



platypus



Opera  
House

Q



Quokka

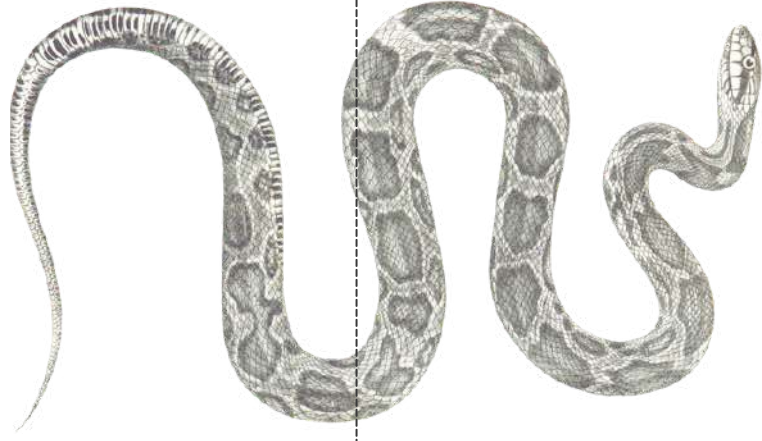
R



Rosella

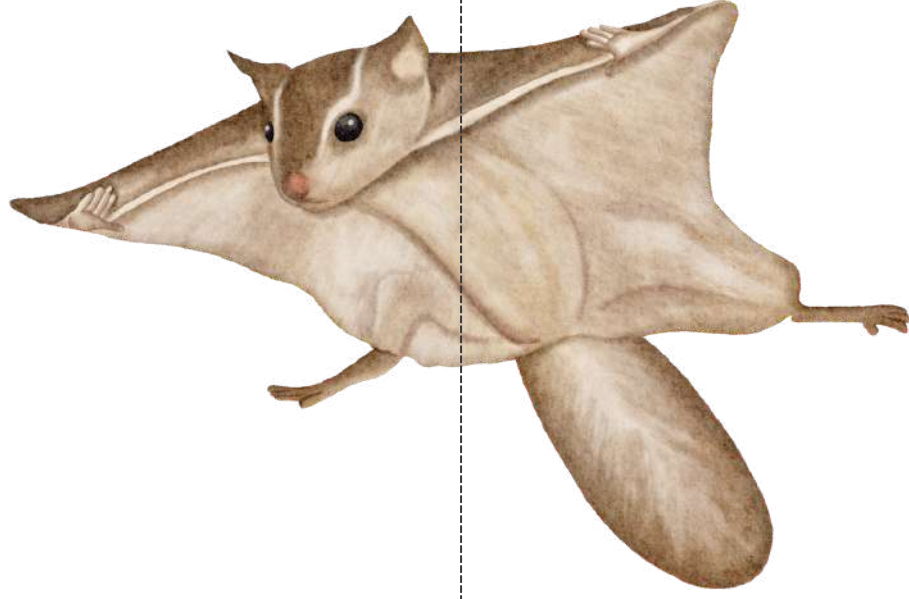


E



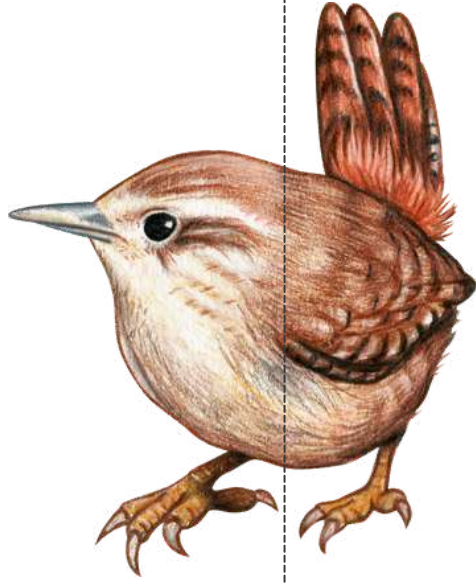
Tiger  
snake

S



sugar  
glider

V



Variegated  
fairy wren

U



Ulysses  
butterfly

W



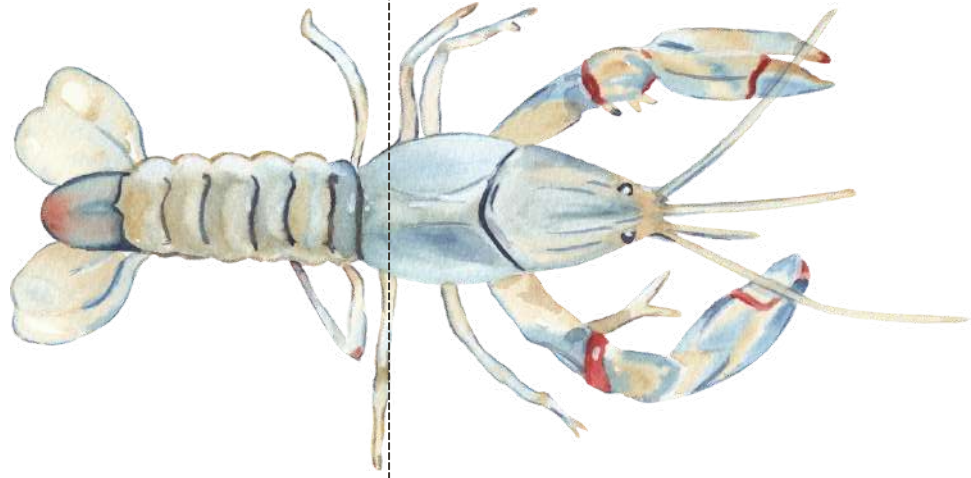
Waratah

X



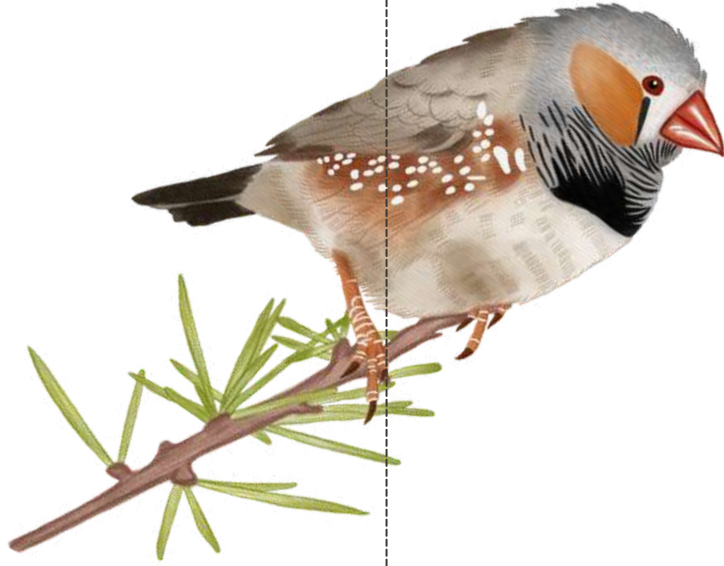
Xanthorrhoea

Y



Yabby

Z



Zebra

finch