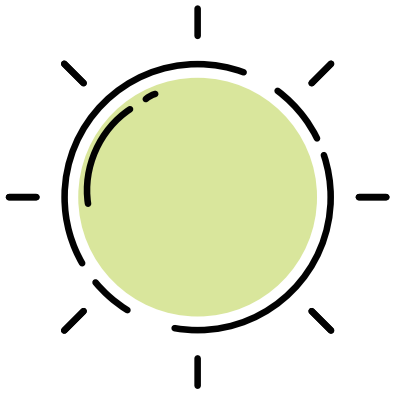


THE WEATHER



IT'S SUNNY



IT'S CLOUDY



IT'S RAINY



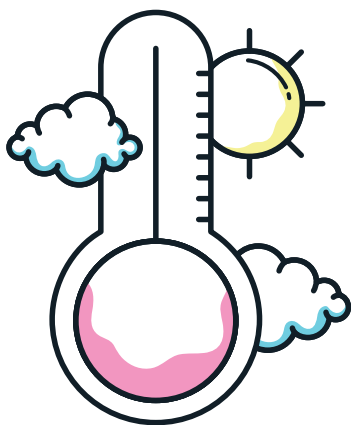
IT'S SNOWY



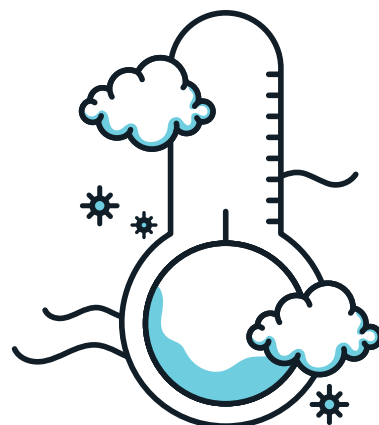
IT'S WINDY



IT'S STORMY



IT'S HOT



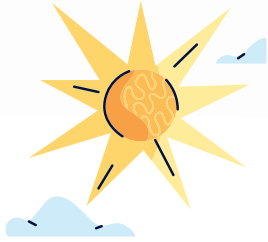
IT'S COLD

Name

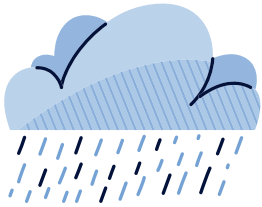
Class :

Types of Weather

Look at each weather and Trace the weather name.



Sunny



Rainy



Windy



Stormy



Snowy



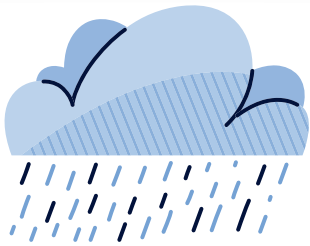
Cloudy

Name

Class :

Types of Weather

Draw a line to match each picture to the correct name of the weather.



Sunny



Windy



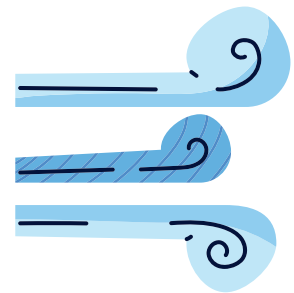
Cloudy



Overcast



Rainy



Snowy

Stormy



Hurricane

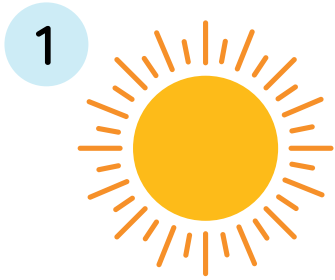


Name: _____

Class: _____

How's the weather?

Match the words and the pictures. Write the number in the box.



	windy
	sunny
	cloudy

	rainy
	stormy
	snowy

Name: _____

Weather Vocabulary

Direction: Put each word under its correct picture.

sunny

rainy

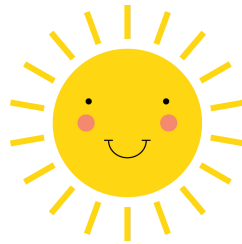
cloudy

stormy

snowy

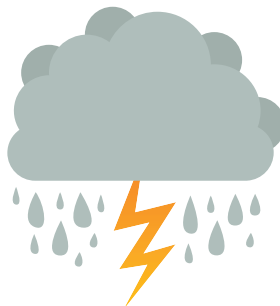
windy













Name

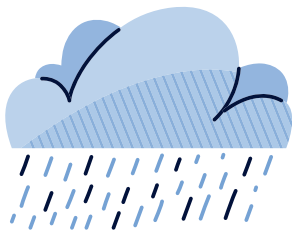
Date

How's the Weather?

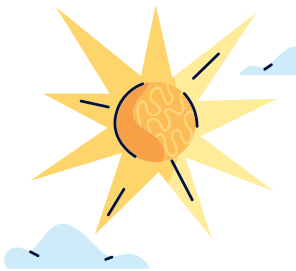
Complete the sentences with the type of weather on the picture.



It's a day.



It's a day.



It's a day.

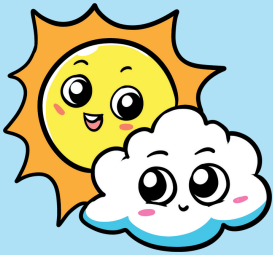


It's a day.



It's a day.

WHAT'S THE WEATHER?



PARTLY SUNNY

Partly sunny is when there are clouds in the sky but sunlight still streams through.



SUN SHOWERS

A rainbow appears after a sun shower.



WINDY

Wind is caused when there is a big difference between high and low air pressure systems.



SNOWY

Snow occurs when water vapor freezes, forming ice crystals called snowflakes.



STORMY

Storms occur when cool air meets warm air. Lightning is electricity within clouds




CLOUDY

When cloud covers most of the sky, blocking much of the sunlight, it is considered cloudy.

WEATHER CONDITIONS

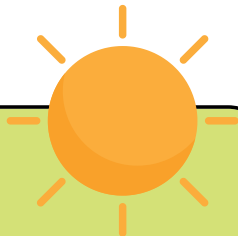
Look at the pictures below and tick the correct options.



Rainy

Sunny


Snowy



Stormy

Sunny


Windy



Partly cloudy

Windy

Rainy



Sunny

Snowy

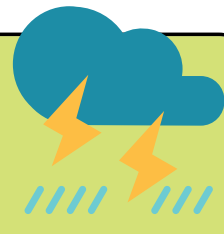
Windy



Rainy

Snowy


Cloudy



Stormy

Snowy


Sunny



Hailing

Lightning


Sunny



Rainy

Cloudy

Sunny



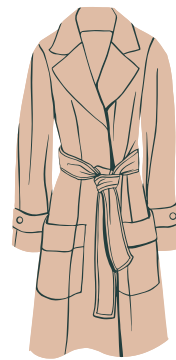
Snowy

Sunny

Lightning

WEATHER AND CLOTHES

Match the weather to the suitable clothing.



What else can you wear in different types of weather? Write the clothes.



A large, empty rounded square box with a thick yellow border, intended for writing clothes suitable for sunny weather.



A large, empty rounded square box with a thick teal border, intended for writing clothes suitable for stormy weather.



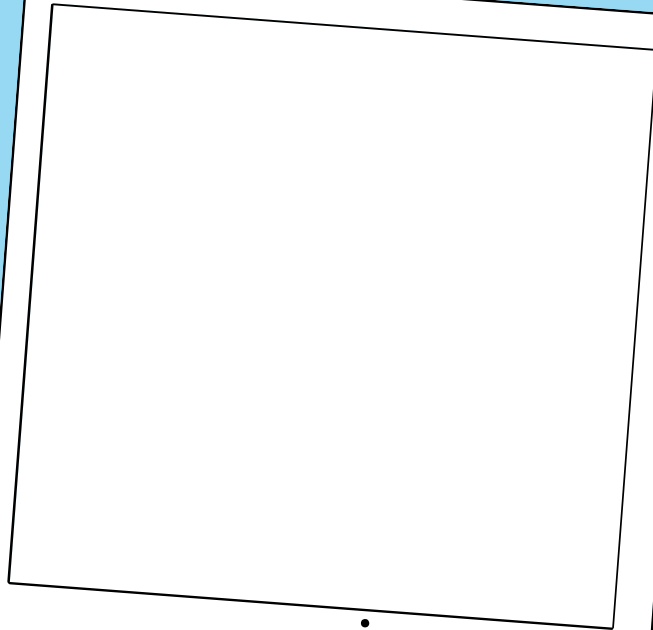
A large, empty rounded square box with a thick light blue border, intended for writing clothes suitable for snowy weather.

DRAW THE WEATHER

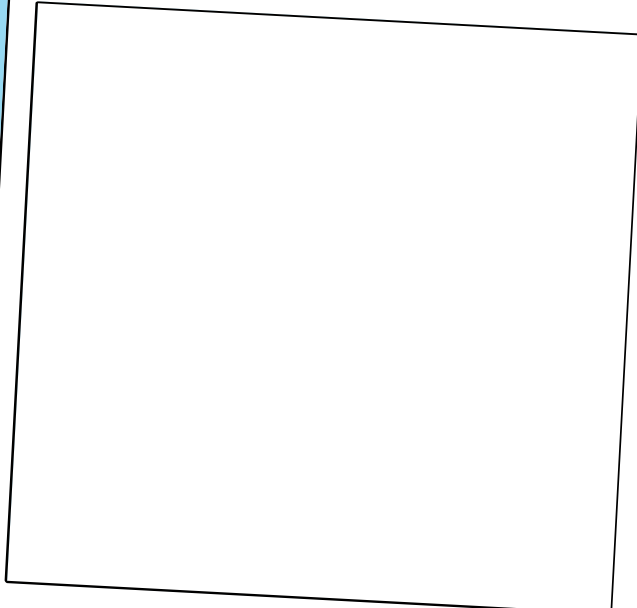
Read, trace and draw the words.



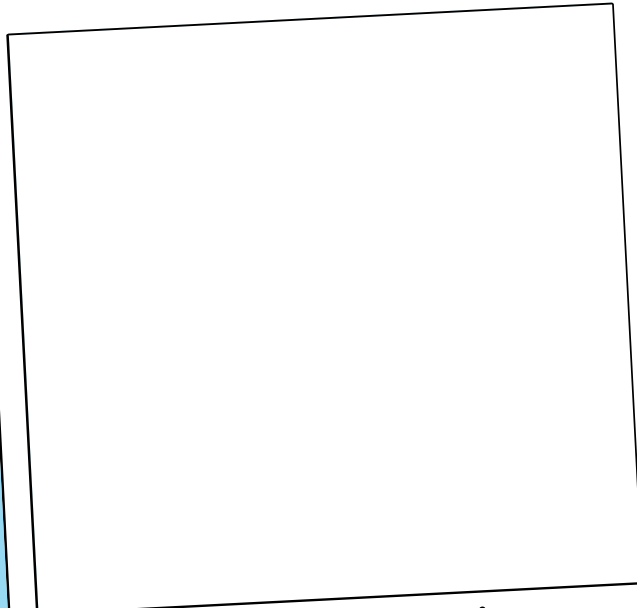
sun



rain



cloud



wind